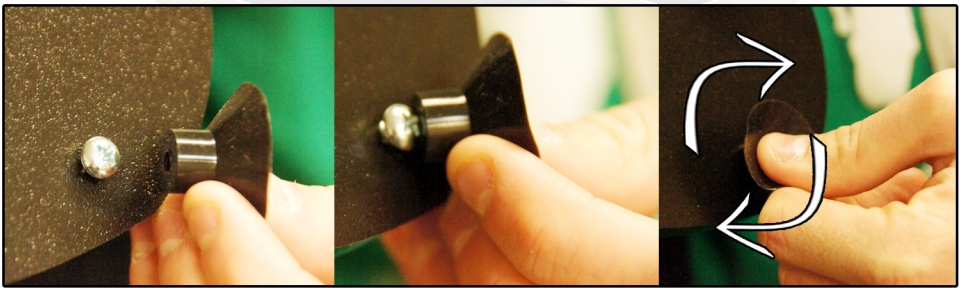


The Martelli Kwik Spin Large Thread Dispenser

Directions

Welcome to the Martelli Family!

Your **Kwik Spin Thread Dispenser** arrives assembled and ready to use. However, if you move your dispenser and one of the suction feet pull off of the dispenser- simply put the suction foot back against the screw and rotate back and forth while pressing against the thread dispenser screw.



It is necessary to have the center of the thread spool with where the thread feeds into your sewing machine. In order to adjust the height of your thread dispenser for this purpose:

1. Loosen the back knob
2. Move the platform up or down
3. Re-tighten the knob

